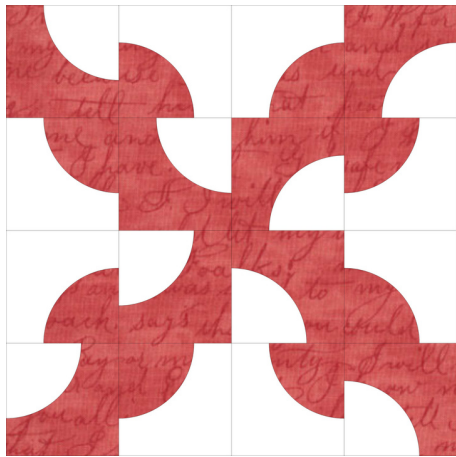


Underground Railroad BOM

Month 8

Drunkard's Path



Color Fabric:

Cut 8 of Template A

Cut 8 of Template B

Background:

Cut 8 of Template A

Cut 8 of Template B

Optional: Cut small notches on the inside edge of Template A pieces - no longer than 1/4 inch.



1. Find the center of each Template A and B pieces by folding in half and finger pressing the edge. Match the center of the inner and outer circles, right sides together. Place one pin in the center mark and one at each outer edge. Carefully begin stitching, stretching slightly so you do not get puckers or folds

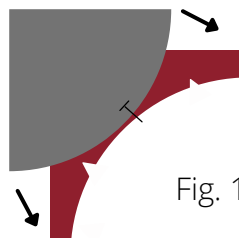
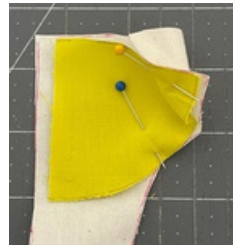


Fig. 1



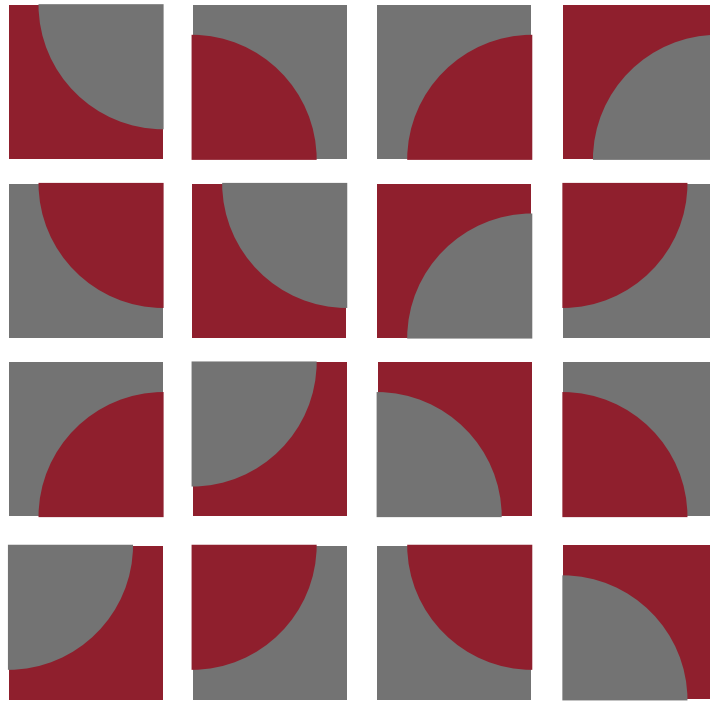
2. Make 8 units of each color combination shown in Fig. 2.



Fig. 2

3. Once units are complete, arrange according to block assembly diagram.

Block Assembly Diagram



4. Sew together in rows. Press each row in direction of arrows. Sew rows together to form block.

